



Virginia Healthcare Workforce Briefs

Indicators from the Bureau of Labor Statistics'
Current Employment Statistics Survey
Series 2: Regional & Sectoral Employment

Series 2, Issue III

June 2021

Inside this Brief:

Regional Employment	2
Regional Employment Growth	3
Subsector Employment	3
Subsector Employment Growth	4
Region Map	5
About the Data	6

Highlights

- ◆ Data in this series are not seasonally adjusted and exhibit short-term volatility from fluctuations in holidays, weekends, weather and other seasonal factors. Estimates for the most recent month are preliminary.
- ◆ Three of Virginia's four major metropolitan regions enjoyed positive HC&SA job growth in May. Both the Rest of Virginia and Northern Virginia experienced particularly strong HC&SA employment growth in May thanks to the creation of 1,000 and 700 new jobs, respectively. Richmond's HC&SA sector also saw positive employment growth in May with a modest gain of 100 jobs. However, HC&SA employment in Hampton Roads fell by 1,100 during the month.
- ◆ Social Assistance continued its recent trend of strong job growth after increasing employment by 900 in May. With this gain, Social Assistance has created 3,100 jobs over the past four months. Hospitals also increased employment in May with the addition of 100 new jobs during the month. On the other hand, Ambulatory Health Care Services lost 300 jobs in May, while Nursing & Residential Care Facilities experienced no employment change during the month.

Data in this report are not seasonally adjusted. Self-employed persons, including health professionals in private practice, are not included.

Data in Brief

Not Seasonally Adjusted*	Employment, in Thousands				Growth Rate, Annualized		
	May 2020	Feb. 2021	Apr. 2021	May 2021	12 Month	3 Month	1 Month
Virginia							
Total Nonfarm	3,640.8	3,843.2	3,897.5	3,900.7	7.1%	6.1%	1.0%
Health Care & Social Assistance	420.2	443.4	443.9	444.6	5.8%	1.1%	1.9%
Hampton Roads							
Total Nonfarm	711.1	753.5	760.6	761.4	7.1%	4.3%	1.3%
Health Care & Social Assistance	89.3	91.2	90.4	89.3	0.0%	-8.1%	-13.7%
Northern Virginia							
Total Nonfarm	1,365.8	1,443.8	1,467.1	1,473.8	7.9%	8.6%	5.6%
Health Care & Social Assistance	123.4	135.5	136.7	137.4	11.3%	5.7%	6.3%
Richmond							
Total Nonfarm	617.2	641.9	644.1	643.4	4.2%	0.9%	-1.3%
Health Care & Social Assistance	80.7	82.5	82.1	82.2	1.9%	-1.4%	1.5%
Rest of Virginia							
Total Nonfarm	946.7	1,004.0	1,025.7	1,022.1	8.0%	7.4%	-4.1%
Health Care & Social Assistance	126.8	134.2	134.7	135.7	7.0%	4.5%	9.3%

Preliminary estimates are italicized

*Seasonally adjusted data are adjusted by the Bureau of Labor Statistics to account for weather and other seasonal changes. Since the U.S. Bureau of Labor Statistics does not provide seasonally adjusted data at this level, this series uses **non**-seasonally adjusted data exclusively. Seasonal variation may account for some of the variation in time series data. When comparing data in this series to other HWDC series or other publications it is important to note whether the data reported have been seasonally adjusted.

Regional HC&SA Employment Growth, Level

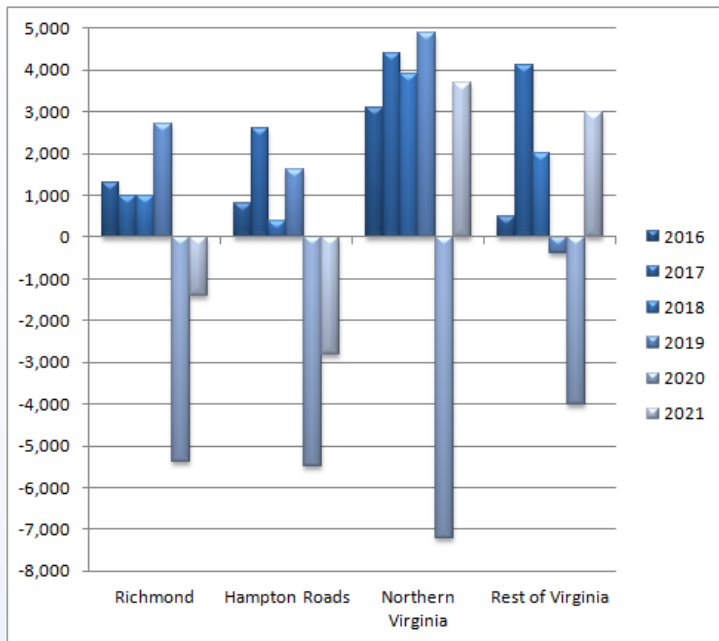


Figure 1: Annual & YTD Change in HC&SA Regional Employment (Not Seasonally Adjusted, Full-Year Change for 2016-2020, Year-to-Date Change for 2021).

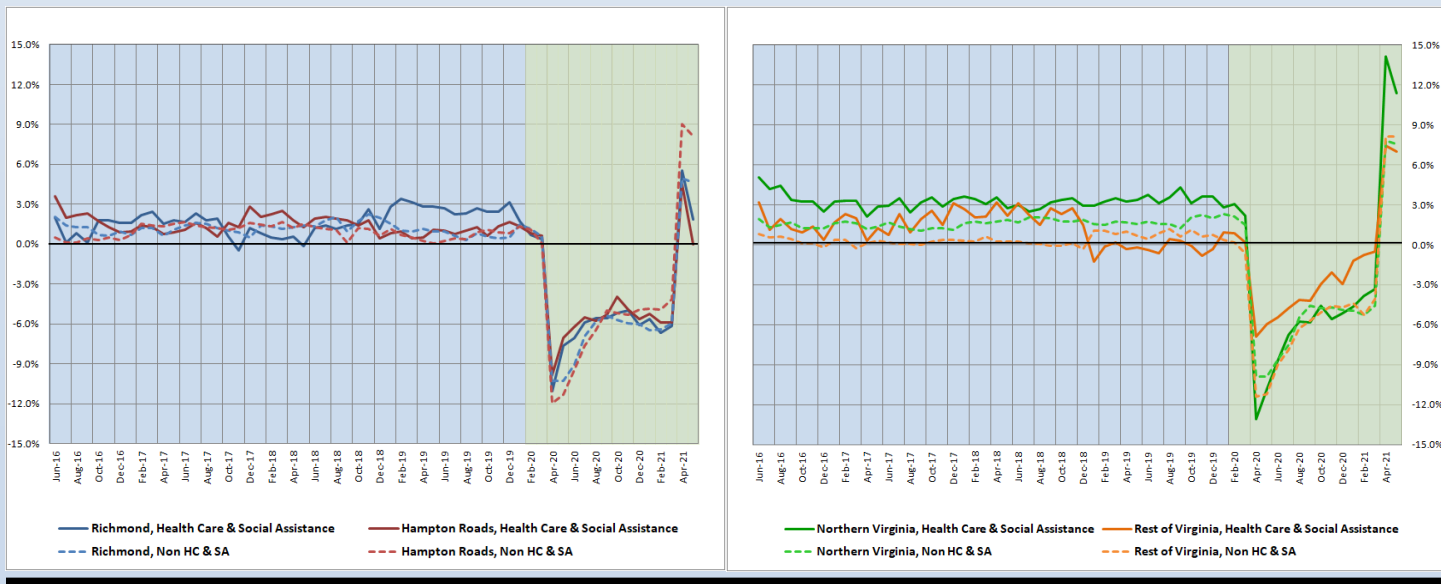
According to the preliminary data released on Wednesday, June 23, 2021, by the U.S. Department of Labor, Bureau of Labor Statistics, Virginia’s Health Care & Social Assistance (HC&SA) job growth in May was concentrated in the Rest of Virginia and Northern Virginia. The Rest of Virginia enjoyed the largest HC&SA employment gain in May with the creation of 1,000 new HC&SA jobs. This result represents a one-month annualized employment growth rate of 9.3%. With this gain, the Rest of Virginia has increased HC&SA employment in each of the past four months. As for Northern Virginia, this region added 700 new HC&SA jobs in May, a gain that translates into a 6.3% annualized growth rate.

Richmond’s HC&SA sector also increased employment during the month. In May, Richmond added 100 new HC&SA jobs to its regional economy, a gain that represents a one-month annualized employment growth rate of 1.5%. On the other hand, the HC&SA sector in Hampton Roads lost 1,100 jobs in May. With this decline, Hampton Roads has experienced seven consecutive months of HC&SA job losses.

Year-Over-Year Regional Employment Growth

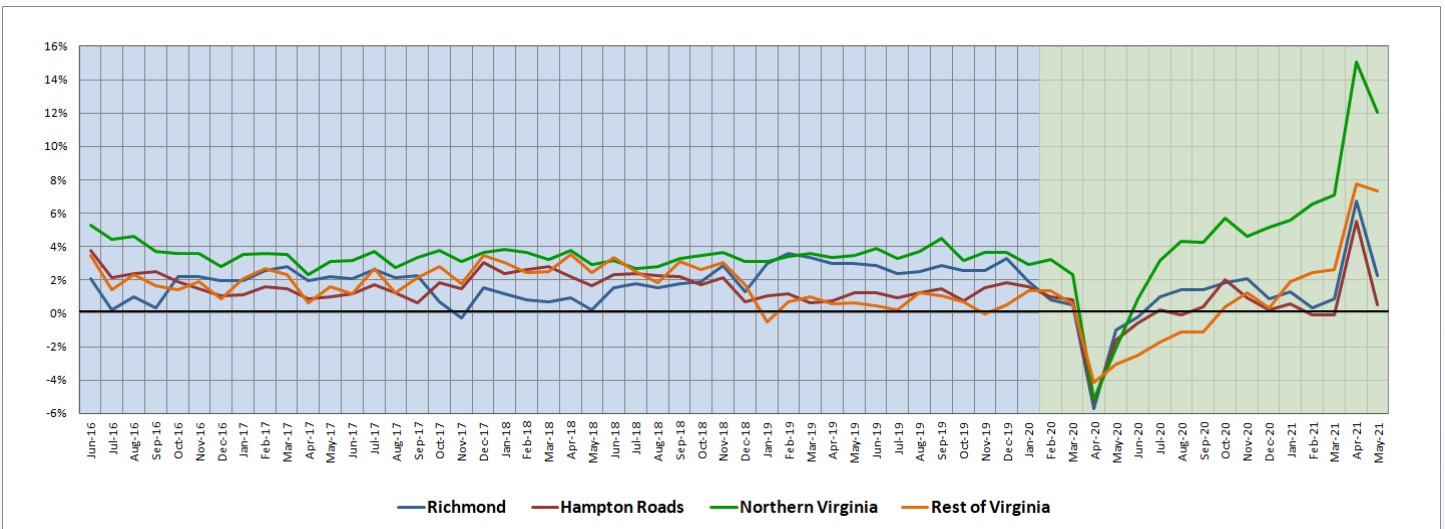
After experiencing dramatic increases in April, the year-over-year HC&SA employment growth rates across all four of Virginia’s regions declined in May. These reversals were most dramatic in Richmond and Hampton Roads. Richmond’s HC&SA sector saw its year-over-year employment growth rate decline by two-thirds from 5.53% to 1.86% in May, while Hampton Roads experienced an even larger decline in its own growth rate from 4.51% to 0.00%. Northern Virginia’s HC&SA sector saw a more modest decline in its year-over-year employment growth rate from 14.11% to 11.35%, while the comparable growth rate for the Rest of Virginia fell from 7.42% to 7.02%.

Figure 2: Year-Over-Year Employment Growth (Not Seasonally Adjusted).



12-Month Average Employment Growth by Region

Figure 3: 12-Month Moving Average, HC&SA Regional Employment Growth Rate (Not Seasonally Adjusted).



For nearly the entirety of the post-lockdown economic recovery period, Northern Virginia has enjoyed the highest 12-month HC&SA employment growth rate moving average. Northern Virginia’s HC&SA sector retained this status in May, although its moving average declined from 15.06% to 12.03% during the month. The Rest of Virginia also experienced a decline in its own 12-month HC&SA employment growth rate moving average in May. However, this decline was quite modest, falling from 7.74% to 7.33% during the month. Meanwhile, Richmond’s HC&SA sector experienced a more significant decline in its 12-month employment growth rate moving average from 6.72% to 2.25%. This was also true of Hampton Roads, which saw its own moving average fall substantially in May from 5.54% to 0.53%.

Subsector Employment Growth

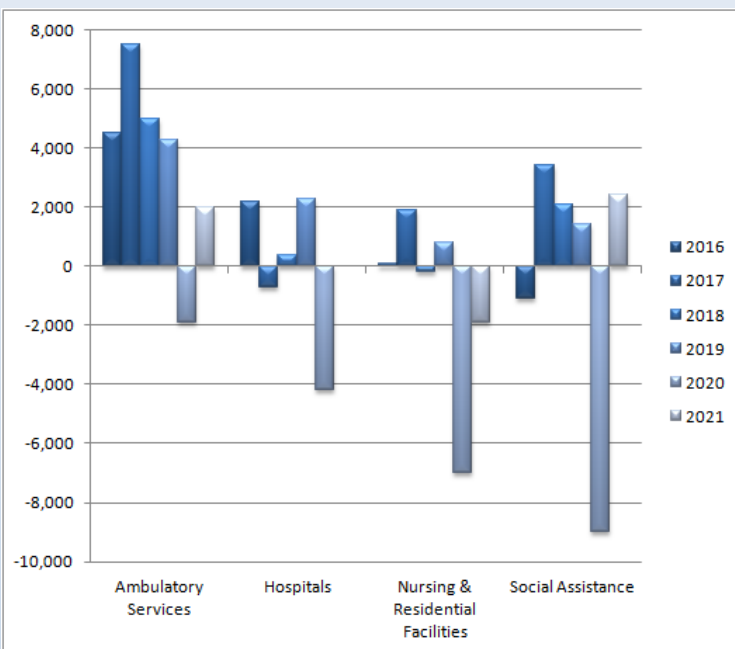


Figure 4: Annual & YTD Change in HC&SA Subsector Employment (Not Seasonally Adjusted, Full-Year Change for 2016-2020, Year-to-Date Change for 2021).

After a difficult start to the new year, Social Assistance has enjoyed consistently solid employment growth over the past several months. This trend continued in May with the creation of 900 new jobs in this HC&SA subsector. With this gain, Social Assistance has experienced four consecutive months of positive employment growth. During this time, Social Assistance has increased employment across the state by 3,100. Even with January’s decline in employment, Social Assistance has created a total of 2,400 jobs so far this year.

Ambulatory Health Care Services is the only other HC&SA subsector that currently enjoys positive year-to-date employment growth. Despite losing 300 jobs in May, this HC&SA subsector has still increased employment by 2,000 in 2021. Meanwhile, Hospitals added 100 new jobs in May, although this HC&SA subsector has experienced no year-to-date change in employment. Finally, Nursing & Residential Care Facilities saw no employment change in May. So far this year, this HC&SA subsector has lost 1,900 jobs.

Distribution of Growth by Subsector

Not Seasonally Adjusted	Employment, in Thousands				Growth Rate, Annualized		
	May 2020	Feb. 2021	Apr. 2021	May 2021	12 Month	3 Month	1 Month
Virginia							
Health Care & Social Assistance	420.2	443.4	443.9	444.6	5.8%	1.1%	1.9%
<i>Ambulatory Health Care Services</i>	175.1	191.8	193.4	193.1	10.3%	2.7%	-1.8%
<i>Hospitals</i>	104.7	104.1	104.1	104.2	-0.5%	0.4%	1.2%
<i>Nursing & Residential Care Facilities</i>	72.4	72.3	69.9	69.9	-3.5%	-12.6%	0.0%
<i>Social Assistance</i>	68.0	75.2	76.5	77.4	13.8%	12.2%	15.1%
Hampton Roads							
Health Care & Social Assistance	89.3	91.2	90.4	89.3	0.0%	-8.1%	-13.7%
<i>Hospitals</i>	21.9	21.1	21.2	21.2	-3.2%	1.9%	0.0%
Northern Virginia							
Health Care & Social Assistance	123.4	135.5	136.7	137.4	11.3%	5.7%	6.3%
<i>Ambulatory Health Care Services</i>	60.6	69.2	70.0	70.2	15.8%	5.9%	3.5%
<i>Hospitals</i>	25.9	25.9	26.1	26.1	0.8%	3.1%	0.0%

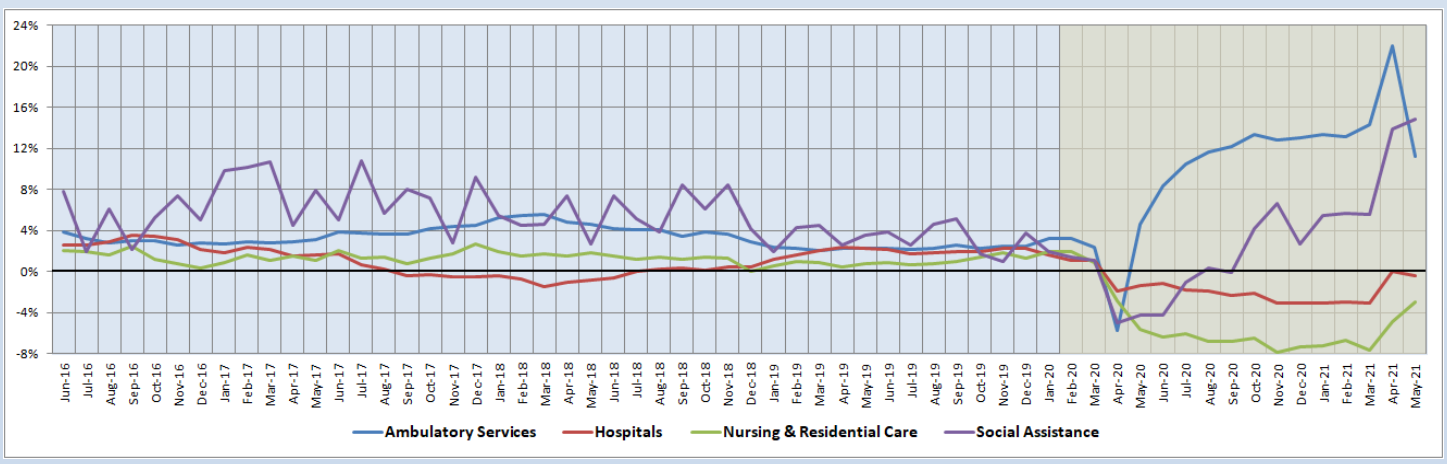
Preliminary estimates are italicized

Both Social Assistance and Ambulatory Health Care Services are enjoying strong long-term employment growth. Social Assistance has seen employment grow by 13.8% over the past year, while Ambulatory Health Care Services have a 12-month employment growth rate of 10.3%. The three-month annualized employment growth rates of these two HC&SA subsectors, 12.2% and 2.7%, respectively, are also above the overall statewide HC&SA average, although they diverge considerably from each other. This divergence is even greater with respect to May’s employment results. While Social Assistance grew employment at a 15.1% annualized rate, Ambulatory Health Care Services saw employment fall by 1.8% on an annualized basis.

12-Month Average Employment Growth by Subsector

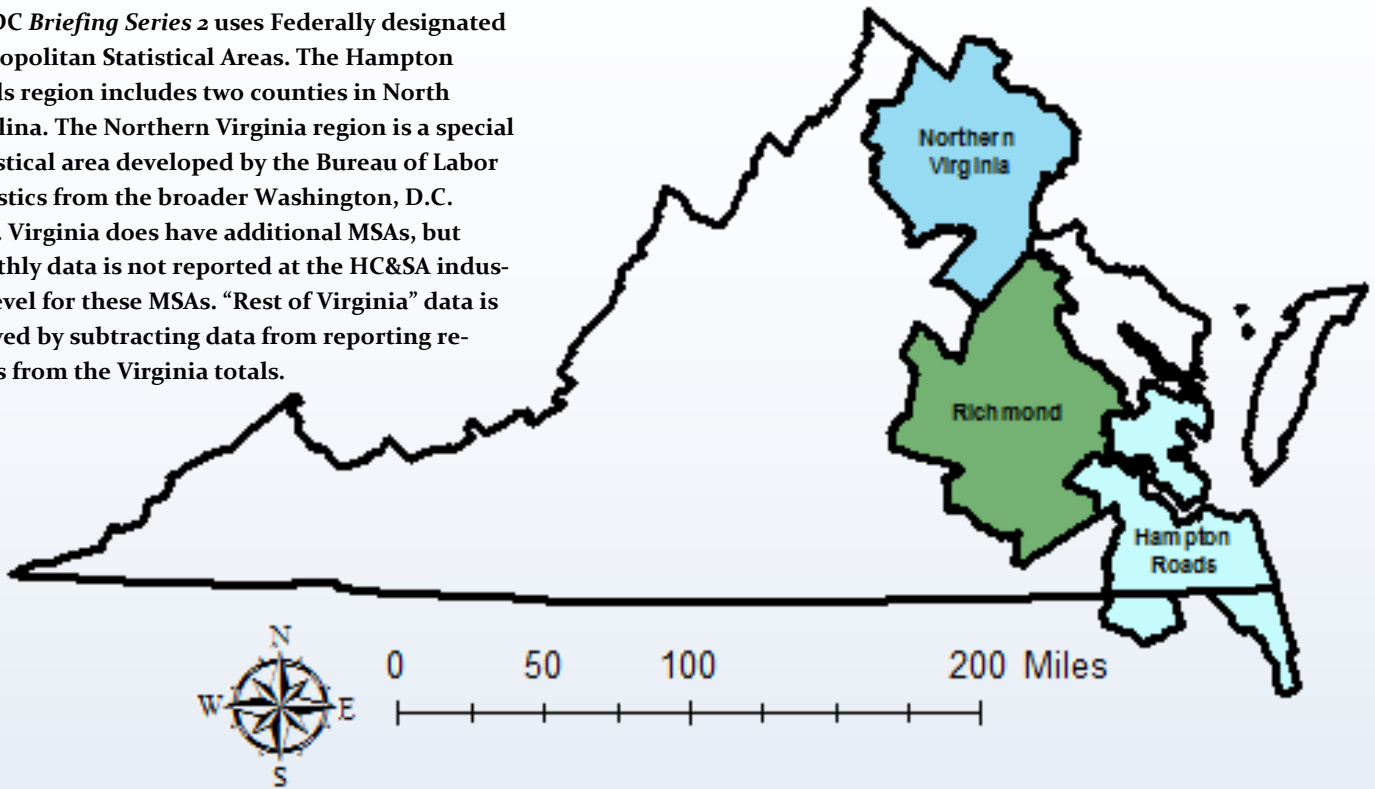
For the first time in one year, Ambulatory Health Care Services no longer have the highest 12-month employment growth rate moving average among Virginia’s four HC&SA subsectors. This is the result of a dramatic decline in its 12-month moving average, which was cut in half from 21.98% to 11.19%. Instead, the highest 12-month employment growth rate moving average now belongs to Social Assistance. In fact, this HC&SA subsector saw its moving average increase from 13.89% to 14.85% in May. Hospitals saw their 12-month employment growth rate moving average turn negative in May, falling from 0.01% to -0.38%. As for Nursing & Residential Care Facilities, their moving average increased from -4.88% to -2.96%.

Figure 5: 12-Month Moving Average, HC&SA Subsector Employment Growth Rate (Not Seasonally Adjusted).



Region Map

HWDC *Briefing Series 2* uses Federally designated Metropolitan Statistical Areas. The Hampton Roads region includes two counties in North Carolina. The Northern Virginia region is a special statistical area developed by the Bureau of Labor Statistics from the broader Washington, D.C. MSA. Virginia does have additional MSAs, but monthly data is not reported at the HC&SA industry level for these MSAs. “Rest of Virginia” data is derived by subtracting data from reporting regions from the Virginia totals.



Region Detail

Northern Virginia		Richmond		Hampton Roads	
<i>Northern VA, (Non-standard CES Area 94783)</i>		<i>Richmond, VA (MSA 40060)</i>		<i>Virginia Beach-Norfolk-Newport News, VA-NC (MSA 47260)</i>	
Counties:	Cities:	Counties:	Cities:	Counties:	Cities:
Arlington	Alexandria	Amelia	Colonial Heights	Gloucester	Chesapeake
Clarke	Fairfax	Caroline	Hopewell	Isle of Wight	Hampton
Culpeper	Falls Church	Charles City	Petersburg	James City	Newport News
Fairfax	Fredericksburg	Chesterfield	Richmond	Mathews	Norfolk
Fauquier	Manassas	Dinwiddie		Surry	Poquoson
Loudoun	Manassas Park	Goochland		York	Portsmouth
Prince William		Hanover			Suffolk
Rappahannock		Henrico		<i>Currituck, NC</i>	Virginia Beach
Spotsylvania		King William		<i>Gates, NC</i>	Williamsburg
Stafford		New Kent			
Warren		Powhatan			
		Prince George			
		Sussex			

Healthcare Workforce
Data Center

Perimeter Center
9960 Mayland Drive, Suite 300
Henrico, VA 23233-1463

Phone: (804) 597-4213
Fax: (804) 527-4434
E-mail: hwdc@dhp.virginia.gov
Website: www.dhp.virginia.gov/PublicResources/HealthcareWorkforceDataCenter

HWDC Staff:

Elizabeth Carter, PhD <i>Executive Director</i>	Yetty Shobo, PhD <i>Deputy Director</i>
Laura Jackson, MSHSA <i>Operations Manager</i>	Rajana Siva, MBA <i>Data Analyst</i>
Christopher Coyle <i>Research Assistant</i>	

The Department of Health Professions Healthcare Workforce Data Center works to improve the data collection and measurement of Virginia's healthcare workforce through regular assessment of workforce supply and demand issues among the 80 professions and 350,000 practitioners licensed in Virginia by DHP.

The HWDC collects data on Virginia's licensed health professionals through surveys completed during the online license renewal and application process. Survey results and data may be accessed on our website: www.dhp.virginia.gov/PublicResources/HealthcareWorkforceDataCenter/.

The HWDC also provides a series of Virginia Healthcare Workforce Briefs based data collected by the U.S. Department of Labor's Bureau of Labor Statistics and the U.S. Department of Commerce' Bureau of Economic Analysis.

Virginia Healthcare Workforce Briefs:

Series 1: State & National Employment (Monthly)

Series 2: Virginia Regional Employment (Monthly)

Series 3: Income & Compensation (Quarterly)

Follow us on . . .

Tumblr: <http://vahwdc.tumblr.com/>

About the Data

Data in this report are from the U.S. Department of Labor Bureau of Labor Statistics' Current Employment Statistics program. The CES program surveys about 143,000 businesses and government agencies monthly. Unless otherwise noted, this series uses data that are not seasonally adjusted. Seasonal variations related to weather, holidays, weekends, seasons and other predictable variations are apparent in the data. Short-term changes may be related to seasonal changes rather than underlying trends. Data from recent months is preliminary and subject to revision in future releases from the CES. Revisions will be reported in future editions of this series. Unless otherwise noted, the CES data presented in this series:

Includes:

- ◆ Data on employed individuals drawing a paycheck (payroll employees).
- ◆ All employees, regardless of role, occupation or hours worked.
- ◆ HC&SA employees in the private sector only.
- ◆ Persons employed by health professionals in private practice.
- ◆ Both government and private sector workers in nonfarm employment data.

Does not include:

- ◆ Self-employed workers or volunteers, including health professionals in private practice.
- ◆ HC&SA employees in the public sector. (These are counted as government workers in monthly reports).
- ◆ Information on hours worked or the quality of employment.
- ◆ Government workers in HC&SA level data. (Government workers, regardless of occupation and role, are classified as public sector employees).